

Introducing the Policy

Sustainability is a word that is often used, yet means different things to different people.

The Sustainability Policy seeks to clarify what the Council means by the term 'sustainability'.

This will enable sustainability concepts and principles to be applied more effectively and with more consistency in Council strategies, plans and actions.

The intention of the policy is to include sustainability in all areas of Council activity.









Each person has a role in helping to make our organisation more sustainable and our City a great place to live, work and visit for generations to come.

The Council defines sustainability as:

A dynamic process of continual improvement that enables all people, now and in the future, to have quality of life, in ways that protect and enhance the Earth's life supporting systems.



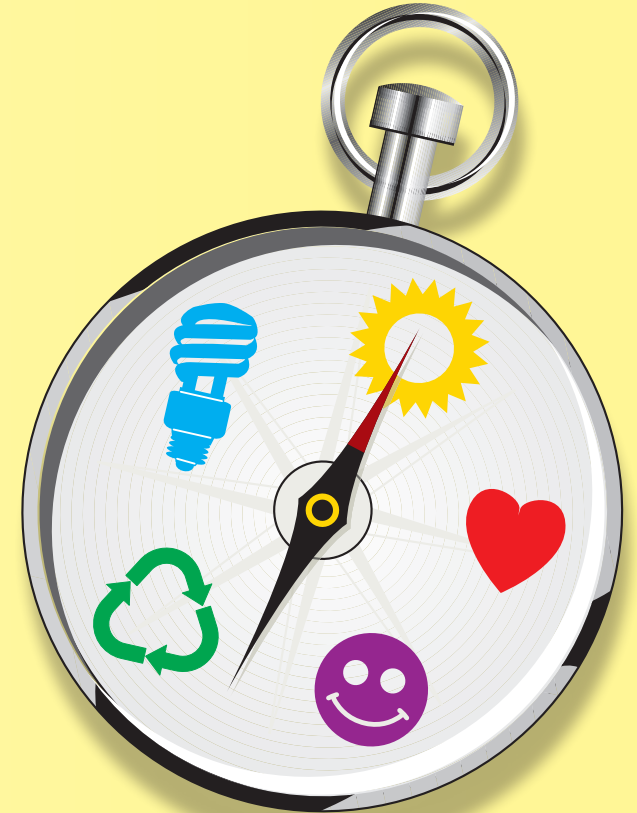
Find out more online:

-  ***A full copy of the Sustainability Policy***
-  ***The origins of the policy***
-  ***How the policy is being implemented***
-  ***Cases studies, tools and resources***
-  ***Helpful tips for Work, Home, School and Play***
-  ***Great links to lots of ideas***
-  ***A forum to share your ideas***
-  ***Up-to-date news***
-  ***Event listing***

Get involved, each person can make a difference

www.ccc.govt.nz/SustainableChristchurch

SUSTAINABILITY POLICY AT A GLANCE



**Living today, looking
forward to tomorrow**

Policy Goals

Example

What can I do



Efficient

Doing more with less

Products and services use significantly less resources (energy, water and materials) to achieve their benefits.

Use efficient computers, vehicles and buildings. Buy kiwi made and local fresh seasonal food. Choose durable quality over disposable. Use water tolerant plants. Collect rainwater for gardens and toilets.

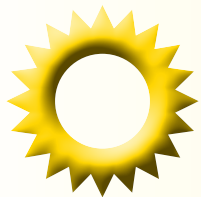


Cyclic

Closed loop society

Reduce the use of materials and substances and reuse them, where possible. Ultimately, all things must be either recycled or composted. Zero solid, liquid and gaseous waste.

Paperless offices - read on the computer, scan, print duplex and don't photocopy. Choose recyclable items, made from recycled material. Hold zero waste events. De-construct, rather than demolish. Compost greenwaste and food scraps.



Solar

Renewable powered and carbon neutral society

The extraction or harvest, processing, distribution, use and reuse of goods and services is powered entirely from renewable sources. Our society uses no fossil fuels and is carbon neutral.

Use public transport, walk, bike or car pool. Avoid air travel. Video conference. Work from home. Turn off computers and lights. Choose products and services from carbon neutral providers. Measure your carbon footprint and offset unavoidable emissions.



Safe

No negative impacts on people and the earth's life supporting systems

All releases into the air, water, soil are non-toxic. Food and fibre are harvested from sustainably managed populations. Indigenous biodiversity thrives. Ecosystems continue to function. People have access to healthy lifestyles and food.

Choose environmentally certified products. Eliminate the use of potentially hazardous sprays and cleaners. Plant natives and volunteer to care for a park. Restore our waterways. Choose food with the heart tick and avoid food additives.



Social

All people, now and in the future, are able to meet their needs

The Policy defines human needs as subsistence, security, freedom, understanding, identity, affection and leisure. If any one of these needs are not met for any individual, then the society is not being sustainable (refer to the Policy for more information).

Consider the different needs of the community in planning and action. See the Council's Health Promotion and Sustainability Through Design Guide. Choose socially responsible products. Invest ethically. Donate. Volunteer in your community. Get to know your neighbours.